



Item	Basic		Option	
	Hardware	Hardware	Software	
Model No.	DSC601C51	DCS601A52	P.P.D. DCS002C51	Web DCS004A51
Max. indoor units	64 Groups	+64 Groups	—	—
Max. outdoor units	10	+10	—	—
Product data and engineering	Configuration and engineering for each project is necessary.		Additional configuration and engineering for each project is necessary.	
For further details, please consult your nearest Daikin Distributor or dealer.				

**Specification**

Name	intelligent Touch Controller (DCS601C51)	DIII-NET Plus Adaptor (DCS601A52)
Power supply	Externally supplied 100 V AC-240 V AC 50/60 Hz	Externally supplied 100 V AC-240 V AC 50/60 Hz
Installation method condition for use	JIS4 switchbox embedded in indoor wall	—
Operating condition	Surrounding temperature/humidity 0°C to 40°C/less than 85% RH (if no condensation)	-10°C to +40°C/less than 90% RH
Dimensions (W x H x D)	230 x 147 x 107 (mm)	157 x 190 x 42 (mm)
Overseas certification	Safety of Information Technology Equipment IEC60730 (including IEC60335)	IEC60730 (including IEC60335)
	Interference (EMC) EN55022 Class-A, EN55024	EN55022 Class-A, EN55024
LCD Panel	Size/no. of dots/no. of colors 5.7 inches / QVGA 320 x 240 / 4096 colors	—
Communication functions	DIII-NET x1 10BASE-T	A/C equipment communication line Web option
Input terminals	Digital input Di x1 Pulse input Pi x3	Forced Shutdown Power measuring pulse

**kWh meter**

item	Requirement Specification
kWh meter Pulse transmitter	<ul style="list-style-type: none"> <li>● 1 Pulse to 1 kW or 10 kW pulse width must be within 40-400 m/sec.</li> <li>● Output relay must be electronic type only. 1 Pulse to 1 kW or 10 kW pulse width must be within 40-400 m/sec.</li> <li>● No voltage output</li> </ul>

**Optional adapters**

Item	Di unit (DEC101A51)	Dio unit (DEC102A51)
Input	8pairs based on a pair of On/Off input and abnormality input	4pairs based on a pair of On/Off input and abnormality input
Output	—	In case of normally output, 4 units are controllable. In case of instantaneous output, 2 units are controllable.
Installation method	indoor unistallation	
Operating Condition	surrounding temperature humidity -10°C to +40°C 10 to 85%	
Power supply	AC200V-240V,50/60Hz	
Rated power consumption	15W	
Applied standard	Safety standard : IEC730,EMC standard : CISPR22-A(EMI),CISPR(EMS)	
Mass(Weight)	2.5kg	
Dimension	198(H) 335(W) 70(D)mm	

**Using intelligent touch controller**

1. Installation of intelligent touch controller must be performed by a Daikin-trained engineer.
2. Once a month, adjust the clock of the intelligent touch controller.
3. Daikin's unique P.P.D. system estimates the power consumption of each individual indoor unit based on data communicated from indoor units and compared to the power consumption of an air conditioning installation with a standard setup. Note that P.P.D. is not a "gauge" adapted to the methods of measuring power consumption in each country. All countries differ in the ways tenant billing systems are implemented depending on their respective legal systems. Data obtained by P.P.D. is for reference only and should not be used for official financial transactions.



About ISO9001  
ISO 9001 is a plant certification system defined by the International Organization for Standardization (ISO) relating to quality assurance. ISO 9001 certification covers quality assurance aspects related to the "design, development, manufacture, installation, and supplementary service" of products manufactured at



About ISO 14001  
ISO 14001 is the standard defined by the International Organization for Standardization (ISO) relating to environmental management systems. Our group has been acknowledged by an internationally accredited compliance organisation as having an appropriate programme of environmental protection procedures and activities to meet the

**Dealer**

**DAIKIN INDUSTRIES, LTD.**

Head Office:  
Umeda Center Bldg., 2-4-12, Nakazaki-Nishi, Kita-ku, Osaka, 530-8323 Japan  
  
Tokyo Office:  
JR Shinagawa East Bldg., 2-18-1, Konan, Minato-ku, Tokyo, 108-0075 Japan  
<http://www.daikin.com/global/>

©All rights reserved  
Printed in Japan 11/06/003 AD-HP-SW

•Specifications, designs and other content appearing in this brochure are current as of November 2006 but subject to change without notice.

Printed on 100% recycled paper with soy ink.



# intelligent touch Controller

Communication capabilities via a Web browser further expand air conditioning control possibilities.



Convenient controllers that offer more freedom to administrators.

**Connectable to up to 128 Indoor units**

The number of connectable indoor units can be doubled by adding an external adapter (Optional)

**Control the Air Conditioning System from Elsewhere**

Centralized monitoring control system based on a Web browser (Optional)

**Malfunction Reports to a Mobile Phone, Anywhere**

Malfunction reports delivered by e-mail (Optional)

**Compatible with the 24-Hour Air Conditioning Network Service System**

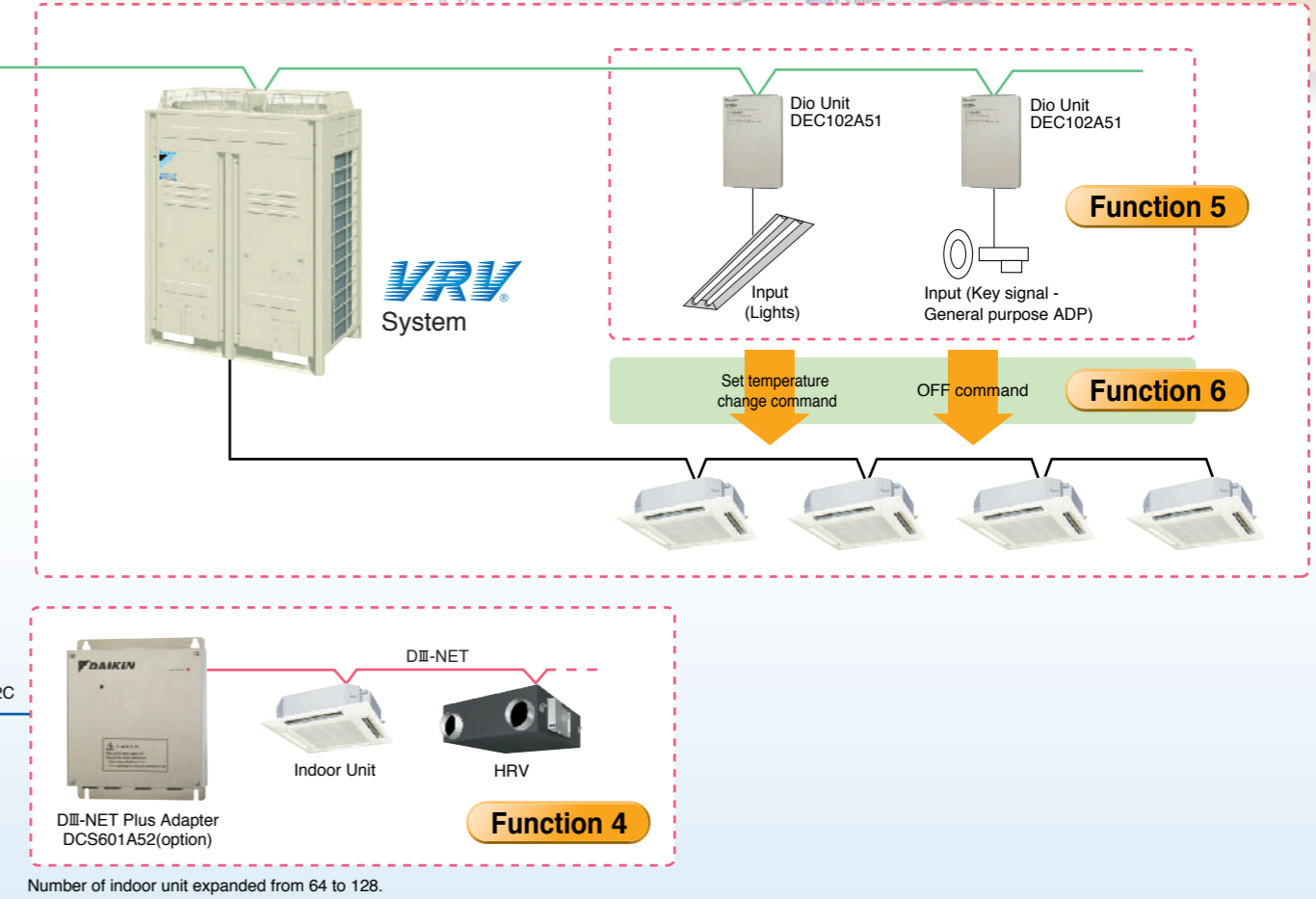
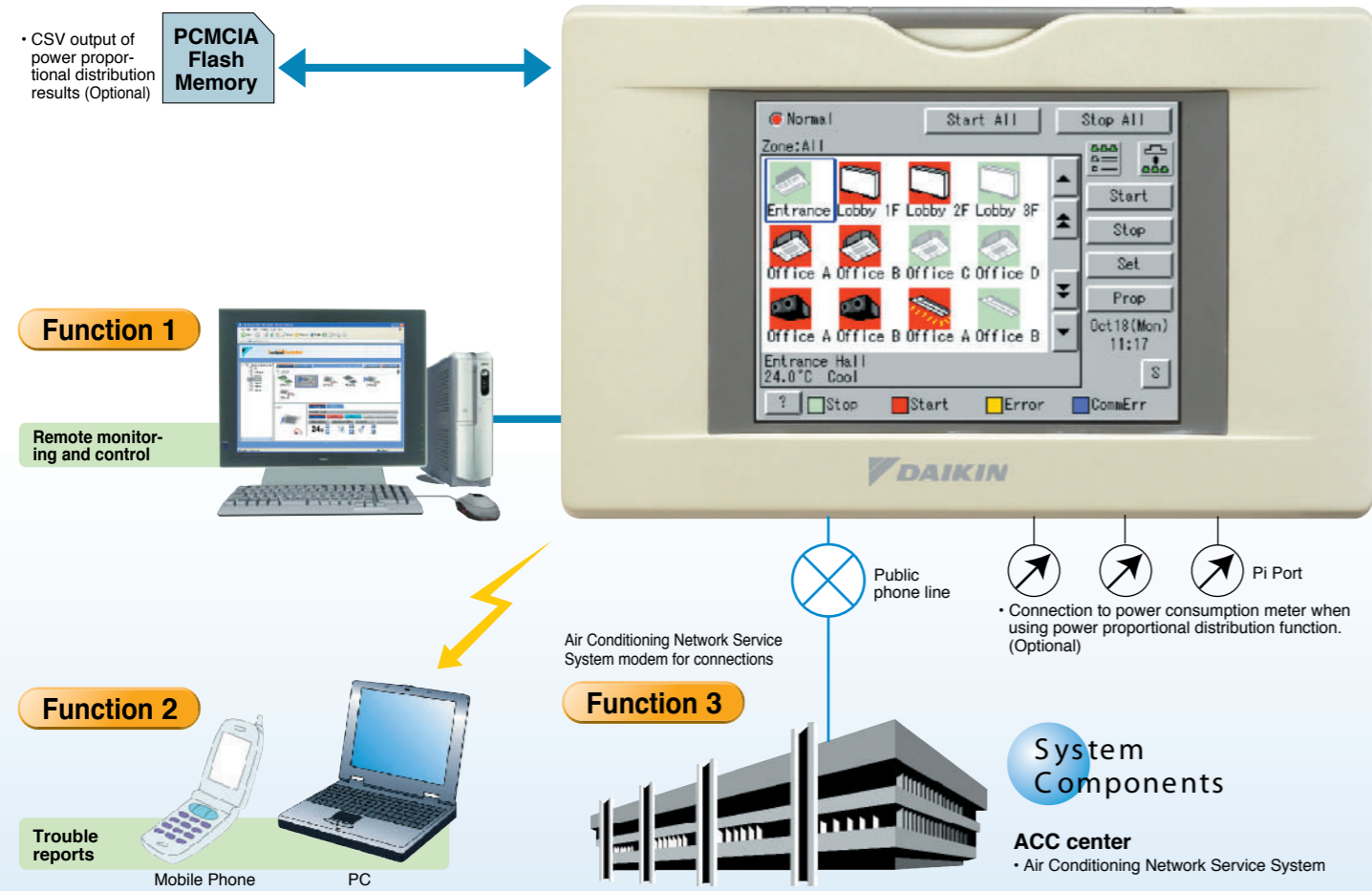
Built-in modem for connecting to the Air Conditioning Network Service System (Optional)



**DAIKIN INDUSTRIES, LTD.**

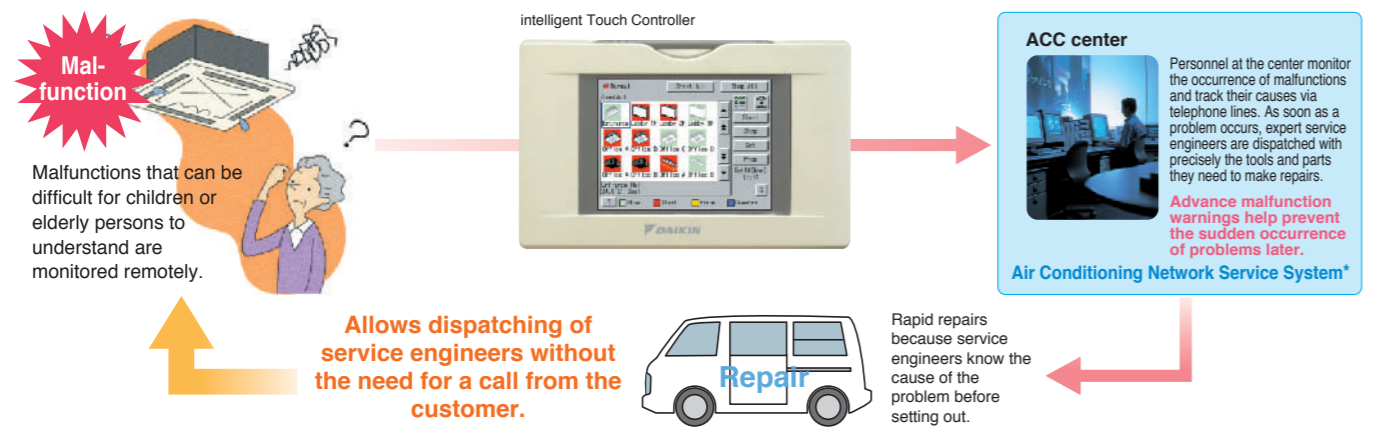
# New communication functions in the user-friendly icon-based multilingual controller simplify centralized control of the VRV system.

The user-friendly controller already features colors, multilingual function, and icons in the display for ease of understanding; now, further convenience has been added. New communication capabilities enable centralized control via a Web browser and the sending of e-mail alerts on system operation. A wide variety of control methods can be accommodated, permitting administrators to monitor and operate the system even when they are away from the controller.



## Enhanced convenience through linkage to the Air Conditioning Network Service System

Can be linked to the 24-hour Air Conditioning Network Service System.



\* There are restrictions in applicable areas and release times, therefore please consult us separately for details.

<p><b>Function 1</b> Support for centralized control from elsewhere using a PC with a Web browser (Optional)</p> <p><b>Function 2</b> Sending of e-mail alerts to a specified address when malfunctions occur (Optional)</p> <p><b>Function 3</b> Built-in modem for connecting to Air Conditioning Network Service System (Optional)</p>	<p><b>Function 4</b> Doubling of number of connectable indoor units by adding a DII-NET Plus Adapter (Optional)</p> <p><b>Function 5</b> Management of facilities / equipment other than A/C units (By adding Dio unit or Di unit)</p> <p><b>Function 6</b> Simple Interlock Function</p>
---	---

# Optional software

## web access function

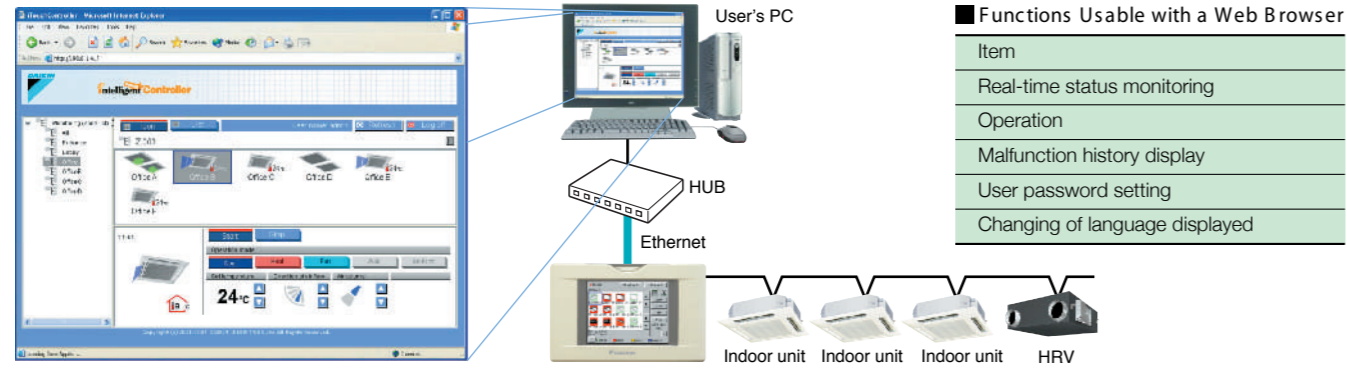
A controller that offers freedom to administrators.

### User-specific access restrictions

It is possible to control the air conditioning system, via the Internet, from your home or any other location with a PC. Should a malfunction occur, a notification is sent by e-mail to a mobile phone or PC (e-mail address specified by the user). This gives administrators the freedom to leave the room where the controller is located.

### Special Software Is Not Required!

Control and management are possible via the standard Web browser that comes installed on all PCs.



Main Monitoring Screen

Notes

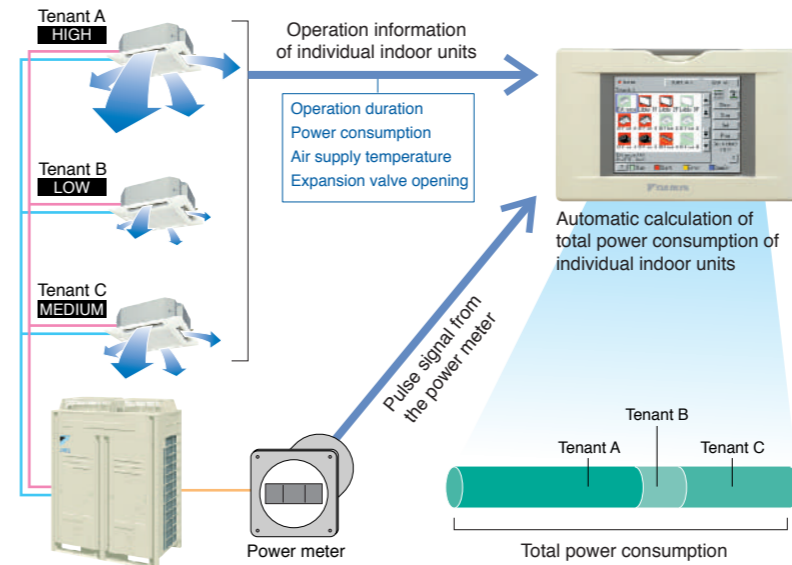
1. Microsoft Internet Explorer 6.0 SP1, or a later version, is the recommended Web browser for use with the system.
2. The J2SE V1.4.2 Java plug-in from Sun Microsystems is required.

## PPD function

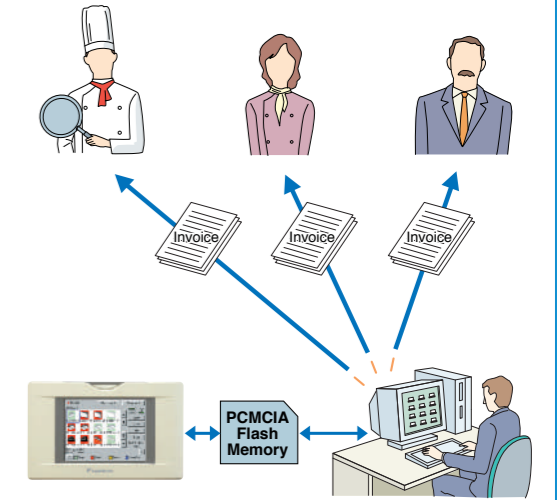
Calculation of air conditioning costs and analysing usage trends(Option)

### PPD (Power Proportional Distribution)

Operation durations and the usage status of individual indoor units are monitored, allowing for highly precise automatic power distribution analysis.



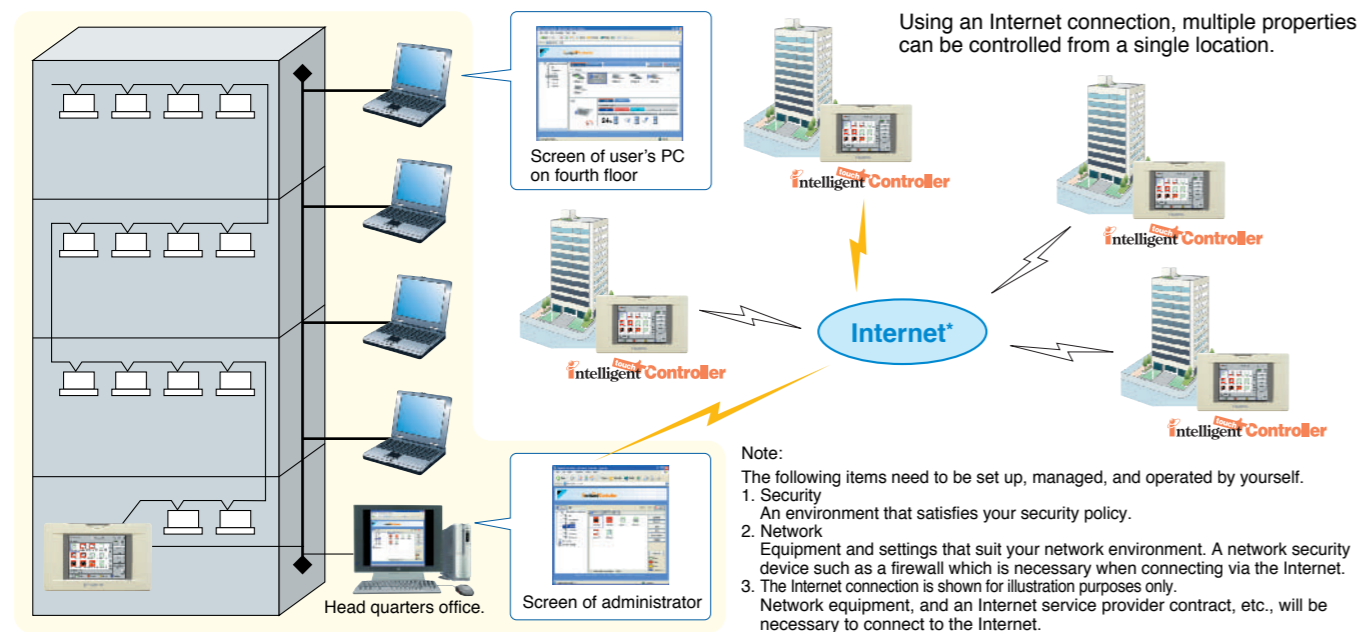
Daikin's exclusive PPD system\* keeps track of power distribution for each indoor unit or any specifically designated area. It performs air conditioning billing calculations quickly and automatically.



\*This measurement method is exclusive to Daikin and has no legal basis.

## Ability to Control Air Conditioning Systems in Multiple Buildings from a Central Headquarters

### Remote Monitoring of Multiple Properties

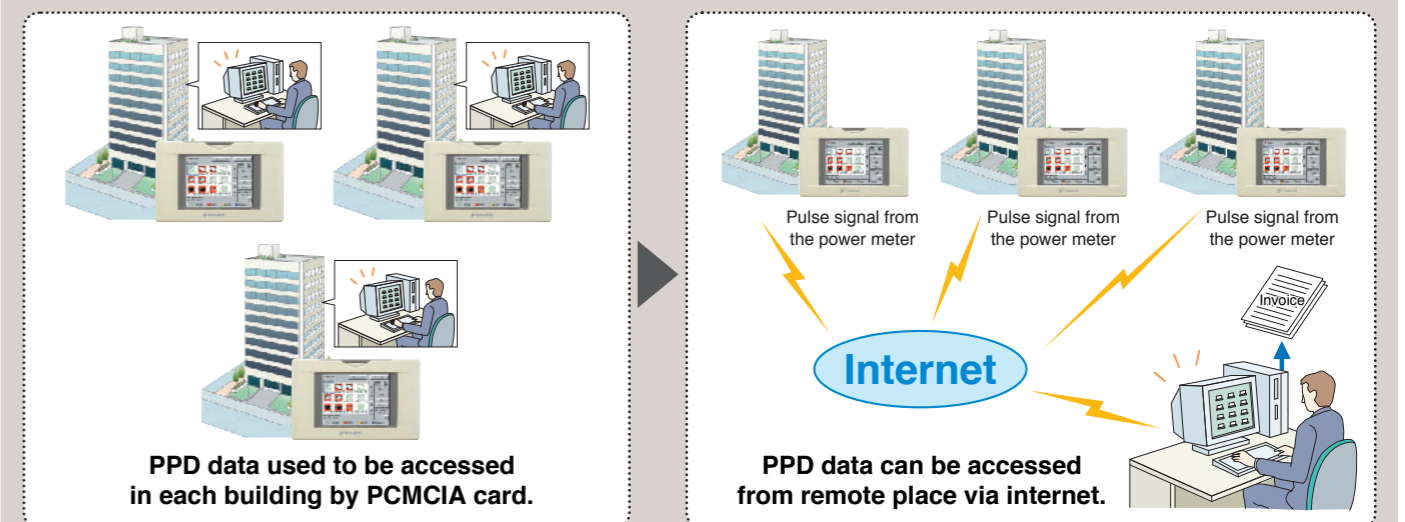


### Availability of PPD data on web by the combination of Web access and PPD function

NEW

#### Availability of PPD data on web

It is possible to access the PPD data of remote and multiple buildings, via internet, from any location with a PC web by the combination of Web access and PPD function. There is no necessity to go to the site, where the intelligent Touch controller is installed. Therefore it enables to simplify the management of electric power control.



# Enhanced legibility and ease of use, plus expanded control functions.

## Control and Monitoring Functions

### Enhanced History Function

The error history function keeps a detailed record broken down by malfunction item. This is an important feature for maintaining the system and dealing with malfunctions, and it helps realize that appropriate maintenance work is performed.

### Enhanced Scheduling Function

It is possible to set up an automated yearly schedule specifying such items as daily startup and shutoff times, temperature settings, and operation modes. In addition, the number of patterns that can be registered has been increased from seven to ten.

### Auto Heat/Cool Change-over

This function allows the optimal room temperature to be maintained without users having to change the operation mode by automatically switching the air conditioner's operation mode (cooling or heating) according to the room temperature for locations where the temperature difference during the day and at night is very large.

### Temperature Limitation

This function automatically starts and stops air conditioners in order to prevent the room temperature of unoccupied rooms from getting too high or too low.

### Simple Interlock Function Added

The simple interlock function allows for controlling of multiple groups and zones based on the operation status of the selected groups or zones.

### Changing Display Colors

The color of the icons indicating running and stopped status can be changed. This makes it easy to customise the display to match the administrator's preferences or match the display of other control devices.

**Note:** Colours shown can be changed.

## Security

### Registering Passwords

Passwords for general users and for administrators can be registered separately, permitting access to different levels of control functions.

## Control and Monitoring Functions

### Color LCD Screen

### Touch Screen Operation

### Icon Display

With just two or three simple actions, you can specify the Air Conditioner you want and control it with the utmost speed

Allows easy operation of a variety of functions including the setting of operation mode and temperature

The user can switch between the icon display, a list display, and an icon detail display as desired.

## Multiple Languages

The display language can be switched as desired (English, French, German, Italian, Spanish and Chinese). By displaying text in the administrator's own language, ease of use is enhanced.